

EMERGENCY RESPONSE PLAN

AUGUSTINE GEORGE 11039

128 North DePaoli Rd.
McDonald, PA 15057

CECIL Township, Washington County

Access Road Coordinates: 40°20'03.87"N 80°11'57.73"W

Well Pad Coordinates: 40°19'59.490"N 80°12'24.720"W

- From I-79, take Exit 54 (Bridgeville exit) and take SR 50W
- Go 5.0 miles on SR 50W to right on T-797 (N. DePaoli Rd)
- Go 1.1 miles on N. DePaoli Rd to site

EMERGENCY CONTACT INFORMATION

Range Resources-Appalachia, LLC: Canonsburg, PA

Title	Contact Number
1. Safety Operations	(724) 754-4514
2. Safety Compliance Coordinator	(724) 754-4515
3. Safety Director	(724) 754-4516
4. Security Manager	(724) 754-4517
24 Hour Emergency Number - (724) 743-6700	

FIRST RESPONDER EMERGENCY NOTIFICATION

Dial 911 from a cell phone or a landline telephone

CLOSEST HOSPITAL

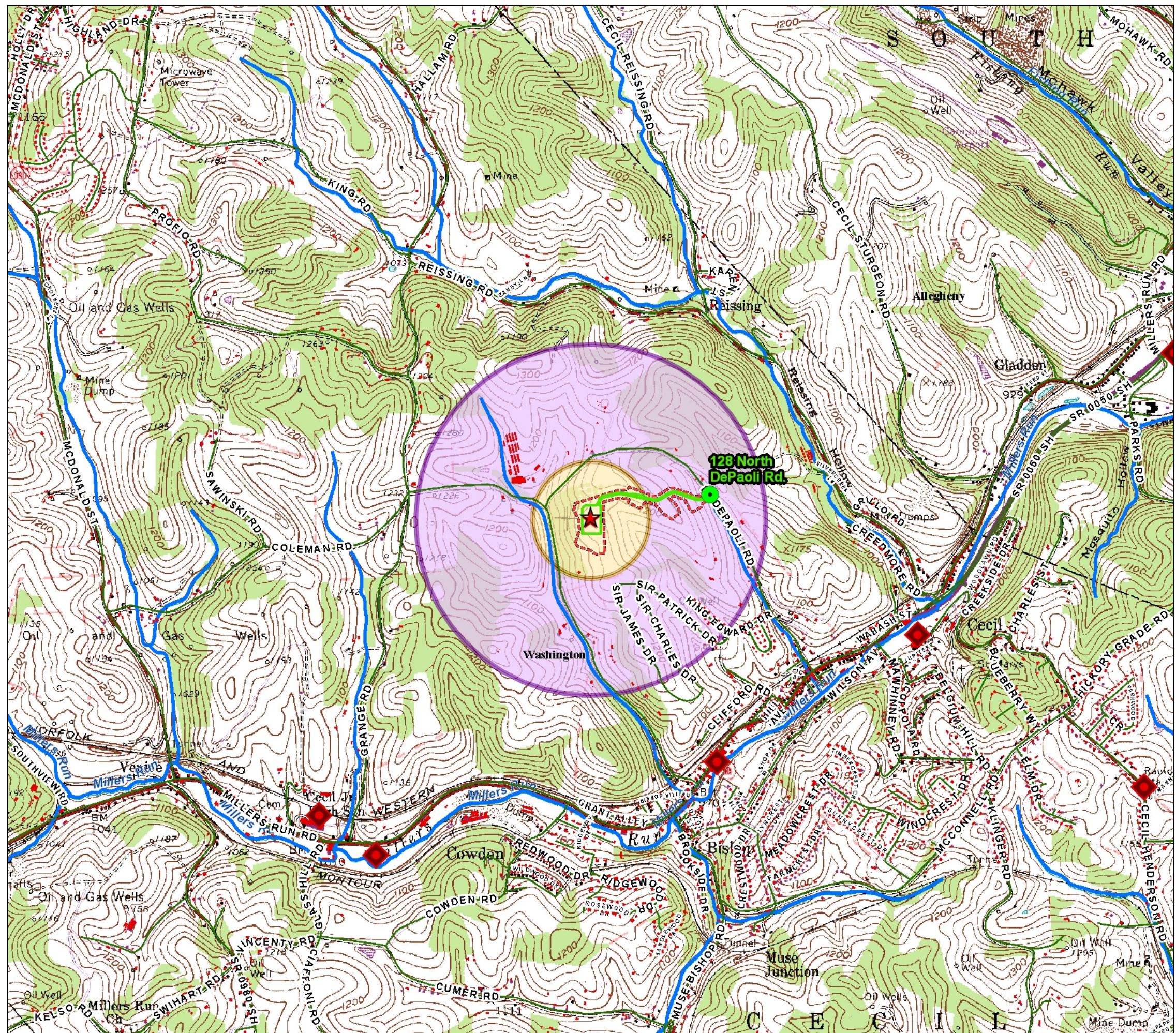
Canonsburg General Hospital

100 Medical Boulevard Canonsburg, PA15317

-  911 Addresses (To Access Rd)
-  County Approved Landing Zones
-  Site Location
-  Limits of Disturbance
-  Access Roads
-  Buildings
-  Municipalities
-  1000' Buffer
-  3000' Buffer
-  Streams
-  Roads

 RANGE RESOURCES

1 in = 1,500 ft



CRITICAL INFORMATION REQUIREMENT FOR FIRST RESPONDER (FR)

The deployment of First Responder personnel and equipment at a Range location in the event of an emergency will be at the discretion of the First Responder Incident Commander. In emergency situations to which local First Responders are called, the Range Company Men and Lease Operators are qualified, and expected, to advise and assist First Responder Incident Commanders on-scene by providing the following type of information to inform Emergency Action planning.

Briefing on the general situation at the incident site—what the problem is.	
	Accounting of personnel on the site; total personnel, casualties, injured; personnel location(s) at the site; possible location of unaccounted-for personnel
	The potential for fire or gas release to become a Level 1, 2, or 3 Well Control Emergency
	Hazardous Material. Location, quantity, and nature of hazardous substances on the site. On-site representative will provide SDS sheets on Drilling and Completions sites; on Production sites SDS in site mailbox; where Security Guards are present, SDS binder will be with the Guard.
	Location of run-off water containments and sumps
	An orientation to the layout of the site; obstacles, access and egress routes, hazardous areas, equipment locations; water sources, auxiliary power units, generators, material handling equipment.
	Location of possible First Responder Command Post sites
	Location of most likely staging areas near the site for parking and equipment staging
	Location of Range security personnel and how to secure the area/control access
	Available communications resources—cell phones primary.
	Location of power, water, and gas lines near/on the site that could affect emergency operations
	Location of residents, critical infrastructure, waterways, and avenues of approach to the site
	Whether special equipment or personnel should be used, i.e., SCBA, HAZMAT teams
	Recommended initial objectives for First Responders

EMERGENCY RESPONSE PROCEDURES FOR WELL SITE PERSONNEL

FIRE:

- Sound the alarm at the site
- Use fire extinguishers to extinguish incipient fires
- For fires beyond incipient stage, call 9-1-1; conduct internal notification
- First Responders contain fires larger than incipient stage, i.e., grass, structure, or equipment fires
- First Responders contain fires at production and storage tanks if safety permits.
- For fires at well head for drilling, completions, and production evacuate and secure site; operator will contact Well Control Contractors for guidance and assistance

MEDICAL EMERGENCY:

- Dial 9-1-1 from a Cell Phone or Landline Telephone; From a Satellite Phone: Call the 9-1-1 Operator by dialing: 724-229-4605
- Provide first aid until Emergency Medical Services arrive
- Conduct internal notification procedures

EXPLOSIONS:

- Execute emergency shutdown procedures
- Safety permitting, attempt to extinguish all heat producing sources
- Immediately conduct personnel evacuation from the site to the Muster Point; account for personnel
- Implement internal notification procedures
- Secure the site and monitor site activity for changes in situation

SPILLS:

- If spill response within the capabilities of site personnel, employ absorbent materials, booms, spill stoppers to contain spill and prevent migration of released material
- Implement internal incident notification procedures
- If warranted, initiate emergency shutdown procedures at the site
- Notify 9-1-1 if local emergency response support is required

SECURITY BREACH or other SECURITY event:

- Contact Security Manager or Law Enforcement
- Register all visitors to site with Security Guard; only authorized personnel permitted
- Establish security to isolate areas subject to investigation
- Follow instructions in PPC Plan

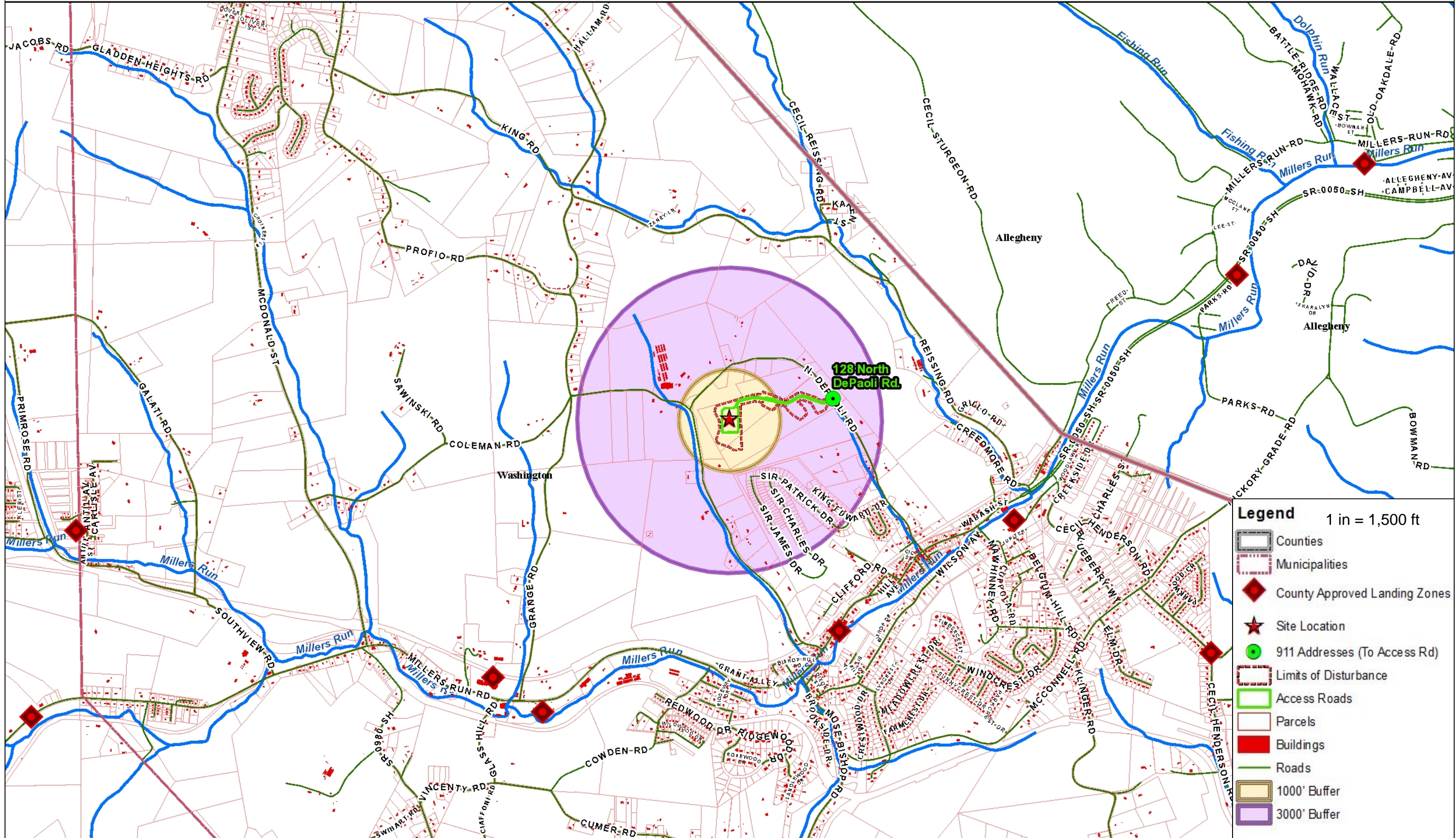
RISKS AND HAZARDS TO THE PUBLIC

Public Risk/Hazard from Well Site Emergencies	Planning Assumptions*
Drifting smoke from on-site fire obscures roadway visibility	<ul style="list-style-type: none"> • First Responders (FR) will assist with traffic control/re-routing
Fire from on-site spreads to surrounding property	<ul style="list-style-type: none"> • FR combat fire on-site where feasible; combat fires spreading offsite • FR Incident Commander determines if evacuation of residents required; assist in traffic control on adjacent roadways • Range Land Department assists with identification and notification of affected residents; Range assists with transportation and temporary lodging of displaced residents
Toxic or combustible fumes from gas release threaten local residents	<ul style="list-style-type: none"> • FR Incident Commander determines if evacuation of residents required; assist in traffic control on adjacent roadways; deploys HAZMAT control team if required • Range Land Department assists with identification and notification of affected residents; Range assists with transportation and temporary lodging of displaced residents
Traffic congestion in conjunction with well control event	<ul style="list-style-type: none"> • FR will assist in traffic control with influx if emergency vehicles and well control traffic • FR vehicles will be staged to not block access road to well site while action plan is being developed • Range will coordinate external equipment and trucking requirements to resolve well control events
Spills	<ul style="list-style-type: none"> • Range will contain spills on-site with existing equipment and absorption materials; heavy equipment will be used to divert and contain off-site fluids • FR will be asked to assist in spill control beyond Range capabilities; assist with notification of residents and evacuation where required; deploys HAZMAT control team if required

* Assumptions common to all: Incident Commander will ensure safety of First Responders in addressing all emergency situation; Reconnaissance of affected site and assessment of situation will be conducted prior to introducing emergency vehicles to well site

Safety Data Sheet (SDS) Information
1. Copies of SDS Sheets are held on site by the Company Representative during Drilling and Completions operations
2. Copies of SDS Sheets are located with the Security Guard at the Site Entrance when Security Guards are deployed at Drilling and Completions sites
3. At unmanned Production sites, SDS Sheets are located in the site mailbox.
Above information provided by: Director, Safety, Range Resources-Appalachia, LLC

SPILL CONTROL/FIRE SUSPENSION
<ul style="list-style-type: none"> • Absorbent pads, disposal drums maintained on each site • Handheld fire extinguishers • Safety trailer available on-call with absorbent material



Legend 1 in = 1,500 ft

- Counties
- Municipalities
- County Approved Landing Zones
- Site Location
- 911 Addresses (To Access Rd)
- Limits of Disturbance
- Access Roads
- Parcels
- Buildings
- Roads
- 1000' Buffer
- 3000' Buffer